

**ASSOCIATION OF
CERTIFIED FRAUD EXAMINERS
CENTRAL OHIO CHAPTER
JUNE, 2008
NEWSLETTER**





Central Ohio Chapter of the C.F.E.

JUNE, 2008

“To improve fraud detection and deterrence through the education and interaction of our members and to aid community efforts to detect and prevent fraud”

FROM THE EDITOR

This is it! The last luncheon (and even sadder, the last newsletter) before we take our summer break and go do that voodoo that we all like to do so well!! To me, one of those activities is sitting on a deck with a cold one in my hand wearing nothing but a smile – OH! I know what you’re thinking! Last I checked this is STILL a kid-friendly publication! (and ‘YES’ is the answer to your question – I’ll be wearing a little more than JUST a smile – I’m thinking 30 SPF too!)

With this being our last meeting before the summer break, it’s also election time! At the luncheon, we’ll be voting for a new President, Treasurer and a Board Member at Large! The shoes of Chrissie, Melissa and Henry are going to be hard to fill – they’ve all done an outstanding, albeit thankless, job for the Central Ohio Chapter! They will be missed but not forgotten! However, this gives YOU the opportunity to participate and become an active member in the Chapter! If you’d like to be considered for any of the above mentioned positions, please let either Mike Day or Heinz Ickert know!

However, just like the old Who song, Won’t Get Fooled Again, the line of “Meet the new boss, same as the old boss” now has a meaning! (YES, I had to look that up – I’m such a young thing!) Anywho (get it?), check out the nominees to see what I mean!

It looks like Summer finally decided to visit Columbus – with a vengeance! (I think Spring is still on vacation somewhere and Winter definitely overstayed its welcome)! For a while there, I thought Summer’s air carrier stopped flying because of the fuel prices!!!

Speaking of gas prices, remember the good old days when it was \$2.85 a gallon? You could fill your tank for around \$40.00! Those were the simple times in our lives! Oh well – can’t live in the past! Have a GREAT summer! Go out and enjoy yourself – and if you see me on my deck, come grab a cold one!

See you September!

MT

TABLE OF CONTENTS

| | |
|------------|---|
| Page 1 ... | From the Editor/Prez Message |
| Page 2 ... | Board of Directors/April Board Min |
| Page 3 ... | June Luncheon Speaker/Community ... Service Proj/CFE Sponsorship/Job |
| Page 4 ... | Election Information |



PRESIDENT’S MESSAGE

As the chapter’s fiscal year comes to a close, we know that Chapter elections are upon us. We are still expecting nominations for the three Chapter offices that will be open and voted on at the meeting. The President, Treasurer, and one Director at Large seats are open this year. All board positions require that you are present at a **minimum of 50%** of the Chapter meetings and the term is for two years. If you are interested in running for a position please let Heinz Ickert or Mike Day know immediately.

As a reminder, the CPE reporting process is transitioning from calendar-year reporting to anniversary month reporting. This change, for those who might have missed it, went into effect January 1, 2008. You should continue to report on a calendar year for 2008. However, you will now be allowed to carryover ten hours of CPE every twelve months, starting in 2008. Beginning in 2009, your required CPE hours will be calculated and prorated based on your anniversary month. Your anniversary month is the month that you renew your annual ACFE membership. Please refer to www.acfe.com for all of the details.

The Association of Certified Fraud Examiners is moving forward with many new events this year for the Annual conference in Boston (July 13-18). They are holding a silent auction with the proceeds going to the ACFE Foundation to fund the Ritchie-Jennings Memorial Scholarship Program. The ACFE is asking members, their organizations, and corporate sponsors for donations. Suggested donations include software, professional services, autographed memorabilia, tickets to sporting events, restaurant gift certificates or vacations, etc. Based upon the Central Ohio Chapter’s participation, we are eligible for incentives. Please see me if you or your organization are interested.

Another opportunity that ACFE is making available in Boston is the ACFE Career Connection. The Career Fair is asking all chapters to encourage their members to post their fraud related job openings. All participating chapters will be recognized at the Career Connection Center. The deadline for submission is June 30; please see me for additional information.

Our year is winding down as after this month’s chapter meeting, we are on summer break until September 17th. I look forward to seeing you all on June 18th at the River Club.
Chrissie

**DIRECTORY OF OFFICERS
2007-2008 CHAPTER YEAR**

| | |
|--|---|
| President Chrissie Powers, CFE, CPA (614) 722-7914 chrissie.powers@reacpa.com | Vice-President Michael Day, CFE, CGAP (614) 728 - 6475 meday@auditor.state.oh.us |
| Treasurer Melissa Smart, CFE (614) 248-8909 melissa.b.smart@jpmchase.com | Secretary Aric Bizzarri, CFE (614) 466-9417 aric.b.1@bwc.state.oh.us |
| Board Member Henry Smith III, CFE, CMA, CCS hcsmith@otterbein.edu Danny Case, CFE, CPA (614) 716 - 1153 dlcase@aep.com | Past President Heinz Ickert, CFE, CPA (614) 464-3343 heinz.ickert@reacpa.com |
| Training Officer Adam Featherling, CFE, AIC (614) 231-0200 x 6100 afeatherling@safeauto.com | Speaker's Bureau Aric Bizzarri, CFE (614) 466-9417 aric.b.1@bwc.state.oh.us |
| Newsletter Editor/Website Administrator Michael Toth, CFE, CGFM (614) 728-7112 mhthoth@auditor.state.oh.us | |
| Central Ohio CFE Website WWW.COCFE.HOMESTEAD.COM | |



**APRIL 16, 2008
MINUTES OF EXECUTIVE
COMMITTEE MEETING**

The meeting was called to order by Chrissie Powers. Others in attendance were Aric Bizzarri, Danny Case, Mike Day, Heinz Ickert, Adam Featherling, Melissa Smart and Henry Smith.

The following agenda items were discussed at the meeting:

- The December 2007 and January 2008 Board Meeting Minutes were accepted.
- Treasurer's report was delivered by Melissa Smart and accepted by the Board. The Board is currently in search of someone to

perform the audit of our Financial Statements for FYE 2007. Current money market/checking balance is \$25,442.09. The Board has approved the following expenses: folders for OIA purchased by Danny Case, \$45.00 PO Box fee, and purchasing the "Board" name tags for CFE Conference.

- Adam Featherling delivered the Training Director's report. Adam has really only received updates from one individual. Adam will follow up the others to get their status.
- A Spring Seminar Update was delivered to the Board. The 2008 Emerging Trends Conference has been scheduled for May 13 & 14, 2008 at the Hyatt Regency. Conference materials have been sent out and online registration is currently available at the Auditor of State's website.
- The Board will once again be accepting requests for Community Projects. Please send all inquires to Adam Featherling.
- The Board is submitting information to Franklin University to update the Central Ohio CFE's website. Chrissie has seen 2 different mock-ups of the new website. A date for the new website to be launched has not yet been determined.
- Mike Day and Heinz Ickert are heading the nominations committee. Positions that have expiring terms this year are President (Chrissie Powers), Treasurer, and Board Member at Large (Melissa Smart & Henry Smith).
- The Board has decided to send the President to the National CFE conference in Boston.
- The Board has also discussed the possibility that the River Club will be increasing luncheon fees and the possibility of allowing entities to advertise in our newsletter.
- Mike Day has nominated the Central Ohio chapter for "Chapter of the Year" and "Newsletter of the Year". Forms were provided to the Board to assist Mike in completing the application.
- A motion was made to adjourn the meeting.



**JUNE 18th
LUNCHEON SPEAKER
LUCAS HUNTER – HUNTINGTON BANK**

Lucas Hunter is an Anti-Money Laundering Analyst with The Huntington National Bank. He will be discussing various Anti-Money laundering cases that he has worked on, as well as giving a brief overview on the Association of Certified Anti-Money Laundering Specialists.

UPCOMING MEETINGS

Get out your Franklin Planner, update your Outlook calendar or write these following dates on the back of your hand because, on the third Wednesday of the selected months, we've got a date at the River Club for the Central Ohio CFE luncheons ... don't be late and I promise to have you home by midnight!!

- June 18, 2008

COMMUNITY SERVICE PROJECT

Once again, your Central Ohio CFE Chapter is soliciting ideas and requests for our annual Community Service Project! This is where we try to help out any Police Department/Community Service Project with an offer they can't refuse: MONEY!!!

**Please inform a Board Member!
Remember, we're here to HELP!!!**

CFE \$pon\$or\$hip\$

We are looking to assist five CFE candidates towards obtaining their CFE certification for the Class of 2008. Anyone interested should contact Adam Featherling (403-0591) so the Board can vote on candidates by the June meeting!

Job Opportunity

We need people with a common purpose and an uncommon commitment to help build the new CUNA Mutual – a dynamic and growing company with a culture of performance, high standards, and defined values.

Our company's history is founded on an unparalleled commitment to the markets we serve. Today, our people are engaged, rewarded for performance, and making a difference for our customers and our community. And our future is based on our people – people driven to deliver value through innovation, involvement, and hard work.

Common Purpose

Uncommon Commitment

Think CUNA Mutual

We are seeking an uncommon professional to join our team as a **Risk Manager II** . . .

- Conduct on-site Risk Management audits and assignments at our insured credit unions.
- Provide technical expertise and training to credit union personnel, Leagues, CUNA Mutual Group field marketing personnel, Corporate P&C internal staff, State and Federal supervisory agencies, and others, regarding Corporate P&C products, services, and Risk Management techniques.
- Provide assistance with sales, retention, and assurance of adequate coverage of Corporate P&C products and services.

You must bring to the table

- 5+ years experience in financial institution auditing, lending, compliance or related industry experience, required.
- BA degree in accounting, finance or related field, required.
- Professional certifications such as CFE, CIA, CRM or related designations are highly desirable.
- Demonstrated excellent organizational, analytical, planning, interpersonal, presentation and project management skills.
- Demonstrated ability to perform with a high degree of independence.
- Willingness to travel 50% to 75% in multi-state Marketing Division. *Candidates must currently reside in the Cincinnati, Ohio area.*

In return for your skills and contributions, we offer highly competitive compensation and benefit packages (including a company vehicle), significant professional growth, and the opportunity to win and be rewarded. To apply, create a career notification agent, and learn more about how CUNA Mutual delivers relevant products – via our Insurance, Services, and Asset Management businesses – to customers around the globe, visit our website at:

www.cunamutual.jobs.

EOE

CUNA Mutual Group has retained Capital H Group, a national HR and Recruitment services firm, to manage this Talent Acquisition Program. To apply for this opportunity or other opportunities within the CUNA Mutual Group Product Organization, please contact:

Amy Boecher – Recruiting Consultant

Office# 414-212-2842

Email: amy.boecher@capitalhgroup.com

Or apply online at www.cunamutual.jobs



Once again, it's that time of year!
It's time to perform your civic duty! Now, I'm not talking about that little thing that's going to take place in November with the whole Obama, Hilliary or McCain thing! I'm talking about voting for YOUR next CFE Board.

JUNE 18TH ELECTION CANDIDATES



PRESIDENT (vote for one)

Chrissie Powers, CFE, CPA, CVA

- Worked in public accounting for over ten years in the areas of audit, taxation, and forensic accounting.
- Currently employed at Rea & Associates in the litigation department where she focuses on the detection, deterrence and investigation of fraudulent activity.
- B.S. in business with emphasis in accounting from Urbana University in May 1998 with Summe Cum Laude Honors.
- Committee member for the 2005, 2004, and 2003 Emerging Trends Conference.
- Current President of the Central Ohio Chapter of ACFE and served as treasurer in the past.
- Member of the AICPA, OSCPA's, ACFE, Central Ohio Chapter of CFEs, IALEIA, HTCC, LEANALYSTS, OIA, Ohio Women's Bar Association, NACVA, IWIRC, IWIRC - Central Ohio Network (currently serves as treasurer), and is a member of the Business Valuation &

Forensic& Litigation Services
Section of the AICPA, etc.

TREASURER
(vote for one)

**Norman A. Hofmann, CPA, CISA,
CFE, CGFM, CITP**

Mr. Hofmann has been an active member of the Central Ohio Chapter of Certified Fraud Examiners since 1995. He is currently serving as the Deputy Chief Auditor of the Medicaid and Contract Audits Section of the Ohio Auditor of State. Mr. Hofmann has been with the Ohio Auditor of State for 12 ½ years. Prior to that, he was a senior analyst with the United States General Accounting Office for 17 years; and an auditor with the Comptroller's Office of the City of Philadelphia, PA. prior to that. Mr. Hofmann has served in numerous capacities with other professional organizations and is a past president of both the Greater Cincinnati and the Central Ohio Chapters of the Information Systems Audit and Control Association. Mr. Hofmann is a Certified Public Accountant, a Certified Information Systems Auditor, a Certified Fraud Examiner, a Certified Government Financial Manager, and a Certified Information Technology Professional. Mr. Hofmann received a Master's of Business Administration from Miami University and a BA from the College of Wooster

BOARD AT LARGE
(vote for one)

Henry C. Smith, III, CFE, CMA, CCS

Henry C. Smith, III, is currently serving as a Board Member at Large for the Central Ohio Chapter of the ACFE. Henry is an Associate Professor of Accountancy at Otterbein College. He possesses a Ph.D. in Accounting and is a Certified Fraud Examiner, a Certified Management Accountant and a Certified Controls Specialist. He teaches at both the undergraduate and graduate levels in the areas of management accounting, cost accounting, management control systems, and fraud examination. He is currently developing a Fraud Examination Track for the MBA Program at Otterbein College. He also is active as a liaison between the professional and academic members of the anti-fraud community, working with both professionals and academics in the furtherance of fraud and forensic accounting in the educational program at colleges and universities across the United States.

DAVE WELCH, CFE, CPA

Dave Welch serves on the Accounting Faculty at Franklin University. Prior to joining the full-time faculty at Franklin, he taught various accounting, finance, and strategic planning courses for twelve years as an adjunct professor while working full-time in the corporate world. In addition to serving as the Chief Financial Officer at a community bank in Virginia, Dave has a broad range of practical experience in the corporate

world having held managerial positions in the graphic arts industry, physician practice management, automobile dealerships, and bank auditing.

Being a CPA and CFE, Dave has a keen interest in business ethics. In 2002, after advising his CEO of what appeared to be fraudulent journal entries and numerous instances of insider trading, he refused to certify financial statements he considered to be materially misstated which resulted in his termination. After filing a complaint for this retaliatory action with the Department of Labor, his case became the landmark case as the first whistleblower to win protection under the Sarbanes-Oxley Act of 2002.

Dave earned his Bachelor of Business Administration and Master of Business Administration degrees from East Tennessee State University, has completed his course work for his doctorate in accounting, and expects, by mid-2009, to complete his dissertation.

MELISSA SMART, CFE

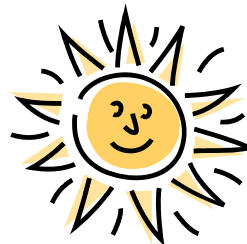
Melissa received a BA in Criminology from The Ohio State University in 1996. While completing her degree, Melissa served as an intern and then was hired as a Criminal Investigator for the State of Ohio (BWC) and was employed there until 1998. In November 1998, Melissa joined Bank One, which has recently become JP Morgan Chase Bank, where she is a Vice President and a Senior Investigator. She became a CFE in 2004 with the help and support of the local Chapter, and is currently pursuing the designation of Certified Forensic Interviewer through Wicklander-

Zulawski & Associates. She previously was the Treasurer for the Central Ohio CFE.



**From your Central Ohio CFE
Board**

**Have a Great and Safe
Summer!**



RESERVATIONS REQUIRED! In case you've forgotten, the Columbus Chapter CFE will be holding their next Luncheon June 18, 2008 at the **RIVER CLUB (CONFLUENCE PARK)**. As is always the case, the food will be great and the speaker will be superb! However, reservations are required.

PRICES: \$12.00 Member/ \$14.00 Non-Member
RSVP: Melissa Smart
(614)248-8909

E-Mail: melissa.b.smart@jpmchase.com

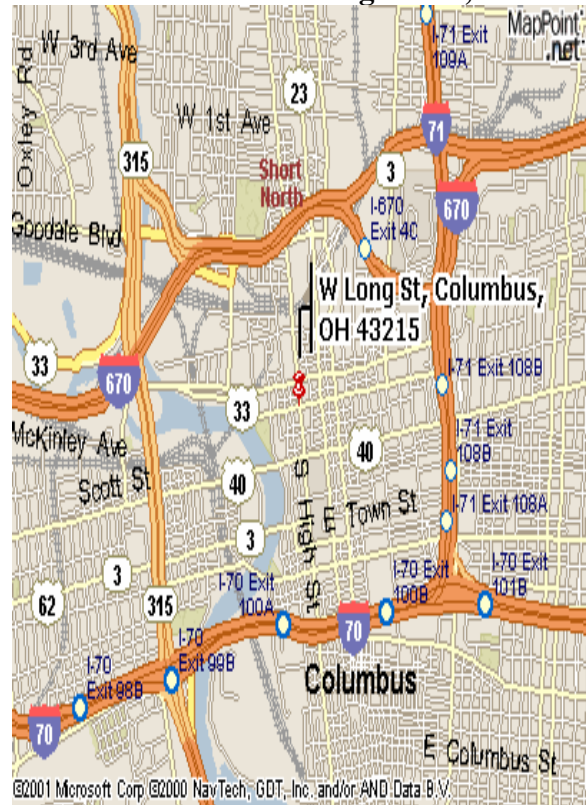
AGENDA: 11:15am Registration
11:30am Lunch
12:00n Speaker

POLICY: The deadline for reservations/cancellations is Monday, June 16, 12:00 noon.

NOTE: ALL RESERVATIONS MADE AND NOT CANCELED BY THE DEADLINE MUST BE PAID FOR.

BONUS: ONE LUNCHEON = ONE HOUR CPE
Check out the National CFE Website:
WWW.ACFE.COM

River Club - 679 W. Long Street, Cols



CENTRAL OHIO CHAPTER, ACFE
P.O. BOX 15312
COLUMBUS, OH 43215

